



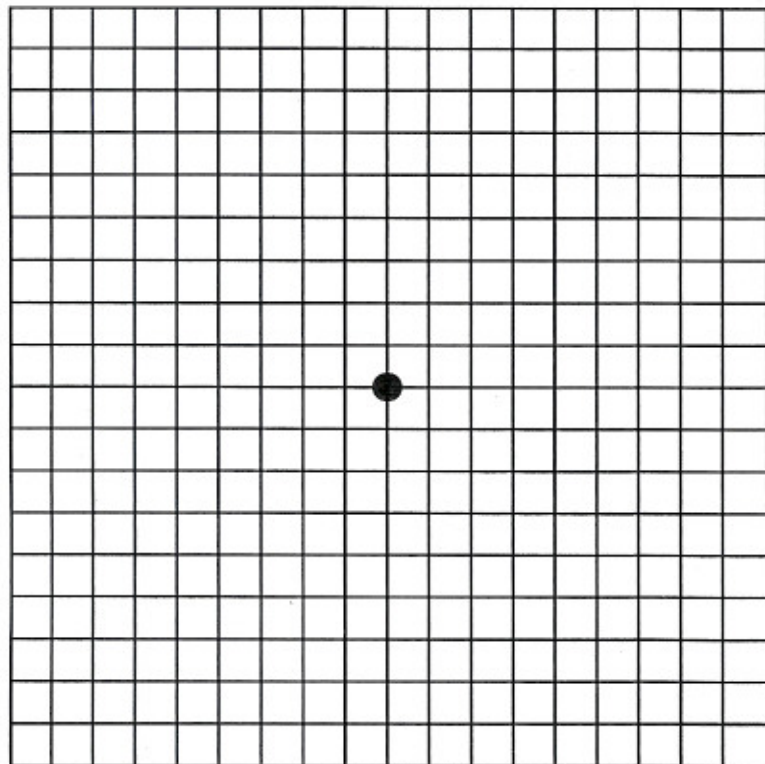
vitreo-retinal consultants, inc.

4676 Douglas Circle N.W. • Canton, Ohio 44718-3619 • Phone (330) 494-1116 • (800) 438-1169
3695 Boardman-Canfield Rd. • Canfield, Ohio 44406 • Phone (330) 533-8851 • (800) 742-7268
3135 Highland Road • Suite A • Hermitage, PA 16148 • Phone (724) 346-4180 • (800) 476-3129
7766 Reynolds Road • Mentor, Ohio 44060 • Phone (440) 918-7417 • (800) 226-1738

MARK A. GERSMAN, M.D. • ROBERT E. WENZ, M.D.

STEPHEN R. KAUFMAN, M.D. • MILTON JAMES, M.D. • MARC F.G. ESTAFANOUS, M.D.

AMSLER RECORDING CHART



GENERAL INSTRUCTIONS

1. Hold the Amsler grid at your normal reading distance while wearing your reading glasses.
2. Cover one eye and focus on the center dot with the other eye.
3. Look for any distortion, missing segments of lines, blurred or gray areas, or black spots on the grid.
4. If any of these areas are new, call your retinal specialist or eye doctor and inform him/her of the grid changes.
5. Repeat the procedure for the other eye.